

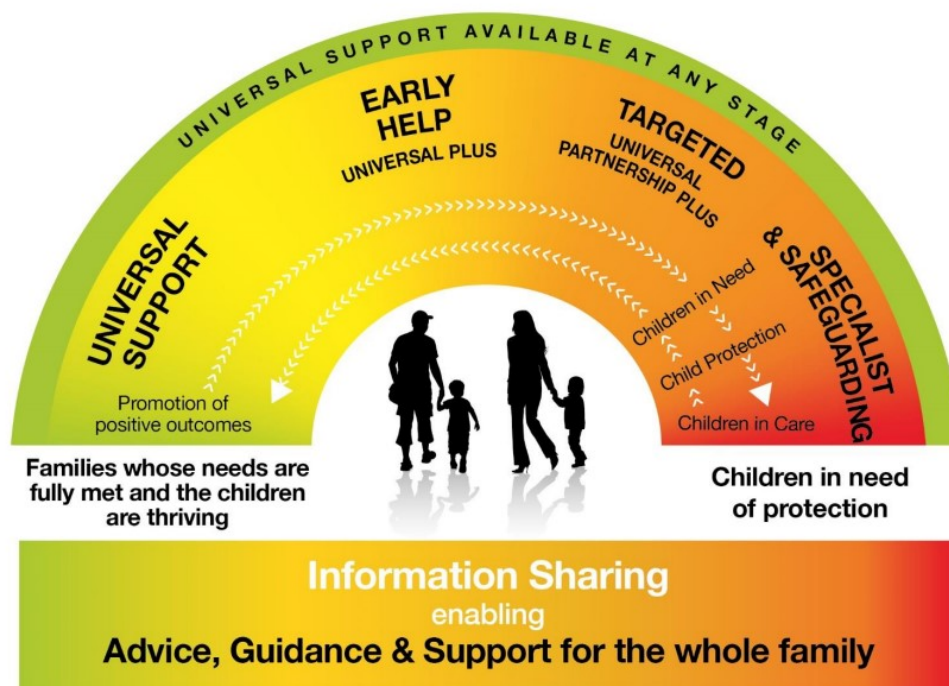


Changing Lives.  
Changing Futures.



Nottingham  
City Council

# Multi Agency Safeguarding Children Hub (MASH)



Download and view the [Nottingham City Threshold of Needs](#)

**IF YOU ARE WORRIED ABOUT A CHILD, PLEASE CONTACT NOTTINGHAM CITY MASH:**

Contact Number: 0115 8765600

Email: [citymash@nottinghamcity.gov.uk](mailto:citymash@nottinghamcity.gov.uk)

Web: <https://nottinghamcity.gov.uk/marf>

Opening Hours: 08:30—16:50.

In an emergency, please contact EDT on 0115 8765600 outside of these hours.

**If you are worried that a child is at immediate risk, please call 999.**

